

Drive Units

RNA drive units offer reliability and endurance. The use of high performance magnets give a continuous high feed rate regardless of the number of parts in the bowl. RNA drive units are renowned for their durability, smooth feed characteristics and low noise levels.



SRC-N 63-2

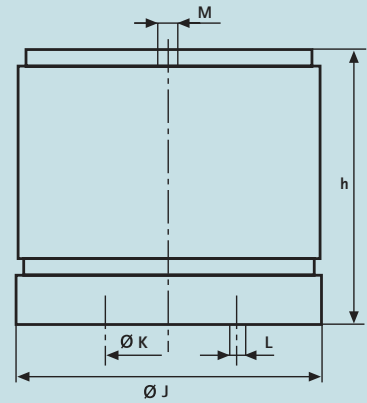
SRC-N 100-2

Electrical Equipment

Supply Voltage 200V 50 Hz

Protection class IP54

Output vibrating frequency: -1=50 Hz/3000 min⁻¹
 -2=100 Hz/6000 min⁻¹



Application area for 50 Hz vibration frequency (-1 design)

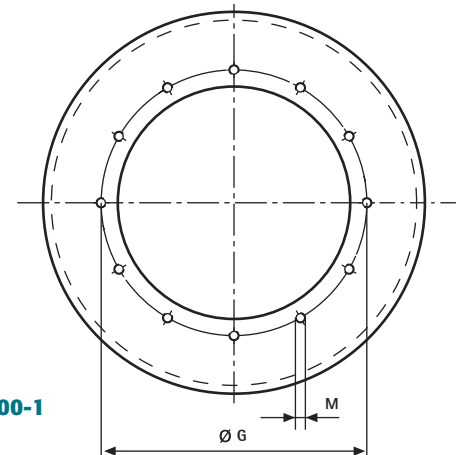
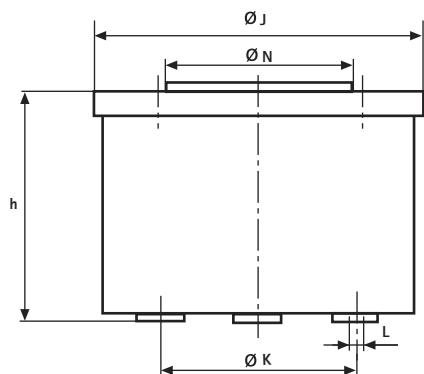
- for heavy additional mass at the bowl (f.e. extensive orienting devices)
- for minor noise emission
- drive unit will be more damageable by heavy loading (filling weight) as by -2 design

Application area for 100 Hz vibration frequency (-2 design)

- if "fine" orienting devices are needed for small sort criterions of the work pieces
- better for critical cutting site passage (small vibrating cast of the work pieces)

Type	SRC-N 63-2	SRC-N 100-2	SRC-N 160-2	SRC-N 200-2	SRC-B 200-2**
h = Drive unit height/ Top casting	65	82	133	165	165
J = Drive unit diameter	60	90	157	180	180
K = Pitch between mountings/ no. of bores	40/2	70/3	120/3	130/3	130/3
L = Thread dimensions	M4	M4	M6	M6	M6
M = Bowl fixing	M5	M5	M8	M8	M8
N = Shoulder diameter	-	-	150	161	161
G = Bolt circle	-	-	-	-	-
Drive unit weight [kg]	0.8	1.8	7	11	11
Rating in amps [A]	0.04	0.055	0.55	1.2	1.2
Length of connection cable* [m]	1.4	1.4	1.4	1.4	1.4

Adapter plates for strange bowls see page 23-1



SRC-N 250-2 • SRC-B 250-2 • SRC-N 400-2 • SRC-N 400-1

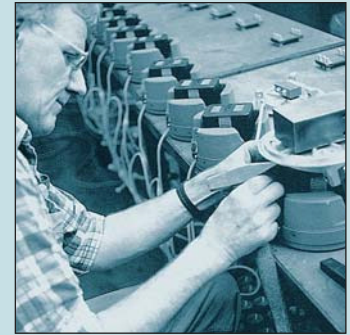
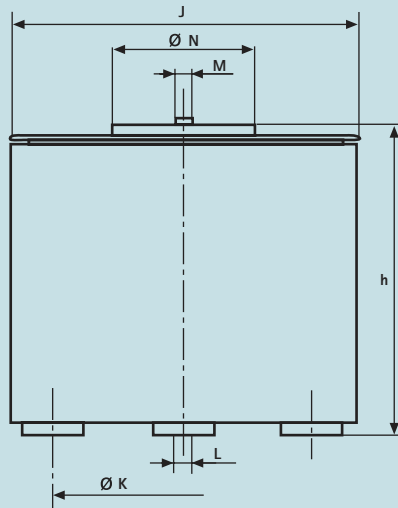
SRHL 400-1 • SRHL 400-2 • SRC-N 630-1



Drive Units



SRC-N 160-2
 SRC-N 200-2
 SRC-B 200-2



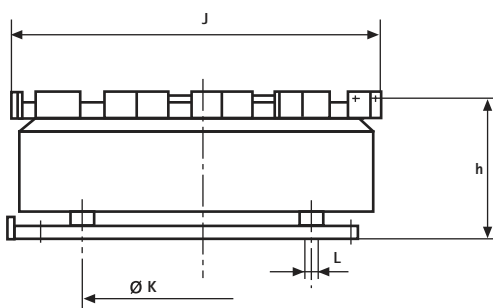
Standard nominal tension 200 V/50 Hz. Also available in special nominal tensions 110 V/220 V and frequencies 50 Hz/60 Hz.

SRHL The bowl feeder type SRHL 400 is a very efficient drive unit and is recommended for use with heavy tooling and high feed requirements.

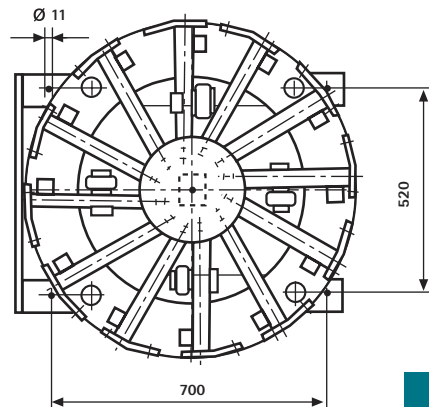
SRC-N 250-2	SRC-B 250-2**	SRC-N 400-1 SRC-N 400-2	SRHL 400-1 SRHL 400-2	SRC-N 630-1	SRC-N 800-1
215	215	228	255	225	315
290	290	440	470	660	826
220/3	220/3	350/3	350/3	560/3	735
M8	M8	M10	M10	M10	M10
M6 8 x 45°	M6 8 x 45°	M6 12 x 30°	M6 12 x 30°	M6 12 x 30°	-
165	165	300	300	500	-
186	186	320	320	525	-
40	40	103	140	168	270
2.6	2.6	3.75(...-1) 4.05(...-2)	5.7(...-1) 5.3(...-2)	5	8.5
0.5	0.5	0.5	0.5	0.5	1.4

* Longer connection cables are available upon request • ** Extra springs for larger capacity

Standard paint finish: RAL 6011 • Special paint finish on request



SRC-N 800-1



Please advise feed direction when ordering (see also page 5)

