

Helping industry power ahead.



# Power Transmission. Vibratory. Conveyor.

Australia | 2025



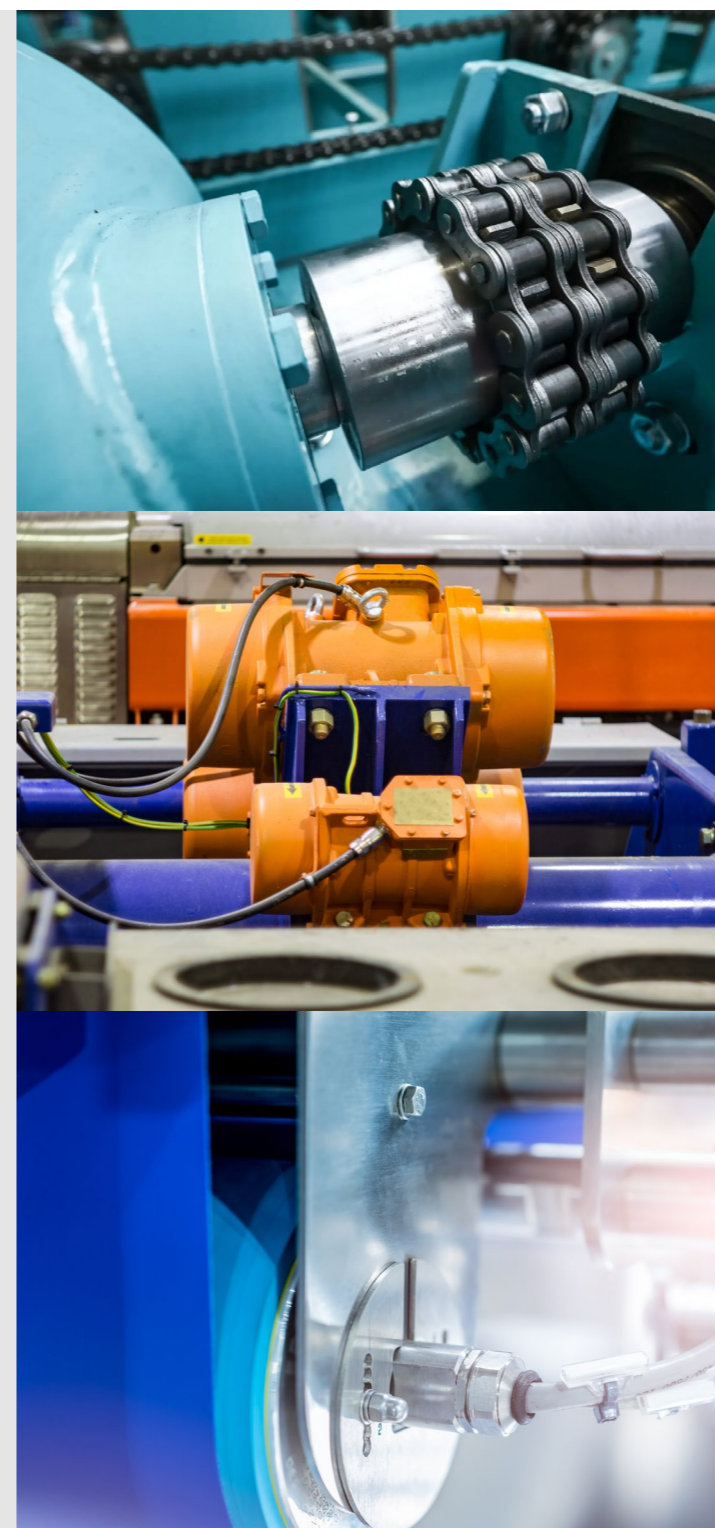
[rrfisher.com.au](http://rrfisher.com.au)

# We help industry power ahead

For over 70 years, RR Fisher has helped industry move forward with enduring peace of mind. Our range of power transmission, conveyor, and vibratory products ensures machinery works to peak efficiency across a wide range of demanding environments.

Now with a head office in Palmerston North, and branches in Auckland, Sydney and Christchurch, we can efficiently serve and supply a wide range of customers across both countries.

With products serving bulk handling, food processing, mining, and manufacturing automation, we will continue to move with the times, improving our processes and increasing our range to deliver the best results for New Zealand and Australian manufacturers.



## Power Transmission

R+W	6
Miki Pulley	6
Flender	7
Cross+Morse	7

## Vibratory

Italvibras	10
REO	11

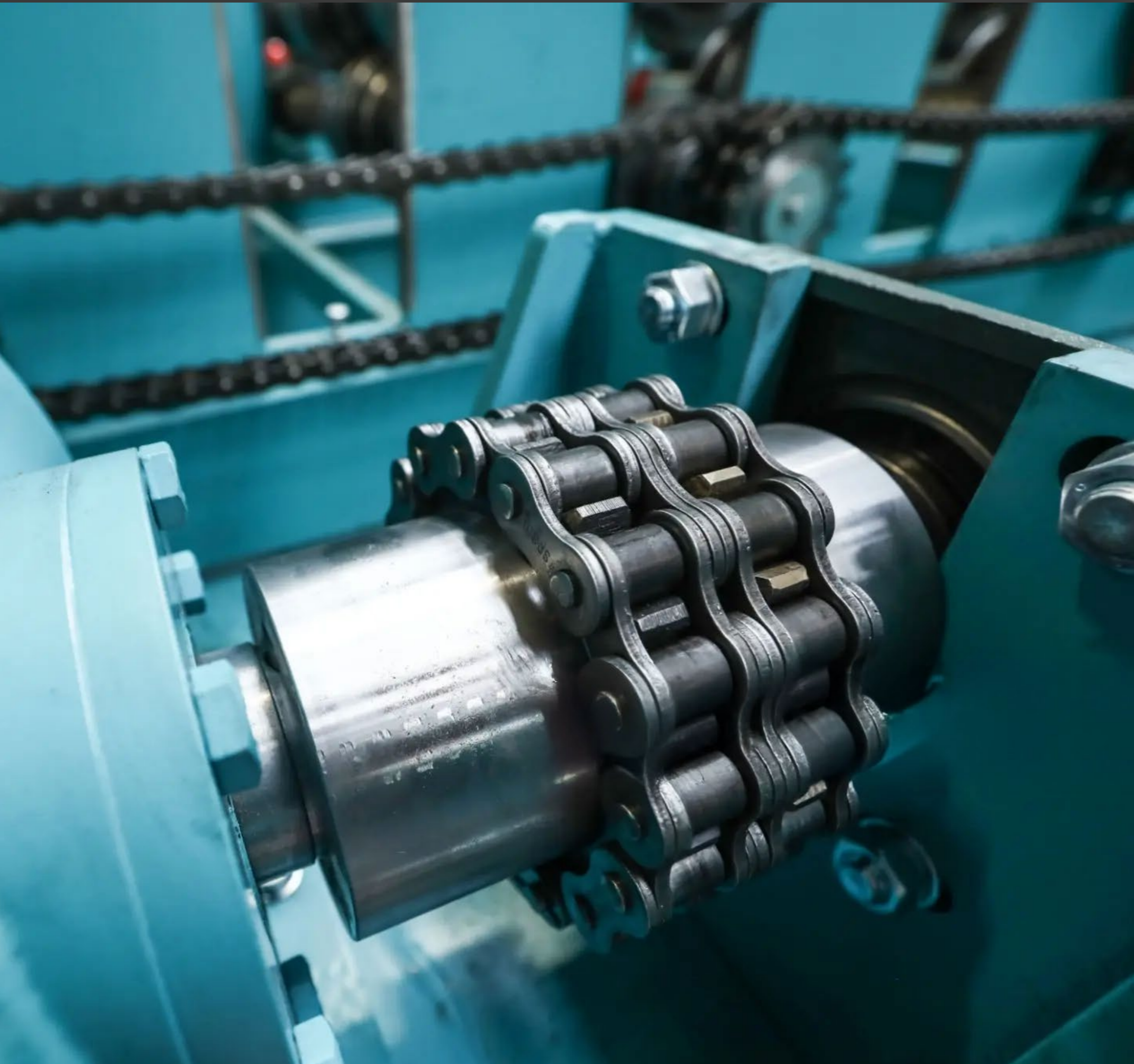
## Conveyor

Rulmecca	14
----------	----



**Todd Burton**  
 Australian Sales Manager  
 M: +61 (0) 418 403 562  
 E: todd@rrfisher.com.au

[rrfisher.com.au](http://rrfisher.com.au)



# Power Transmission: Couplings

RR Fisher offers a comprehensive range of industrial couplings from industry leading manufacturers. Experience tells us that the correct coupling is imperative in our customers industrial systems in order to achieve effective power transmission, correct shaft alignment and reduced wear. Resulting in increased efficiency, safety, and cost savings.

Our range of holdback clutches are important for enhancing safety, protecting machinery, and providing better control in various mechanical systems where preventing reverse motion is crucial.

There are various types of industrial couplings and clutches, each offering different benefits depending on the application. Having the flexibility of multiple suppliers and their unique benefits, RR Fisher can provide the most suitable option for optimal performance in your specific industrial environment.



**Precision coupling:**

- Bellows couplings
- Miniature bellows couplings
- Servo disc couplings
- Elastomer couplings
- Torque limiters
- Line shafts

**Industrial couplings:**

- Safety couplings
- Disc pack couplings
- Flexible gear couplings
- Metal bellows couplings



**Range:**

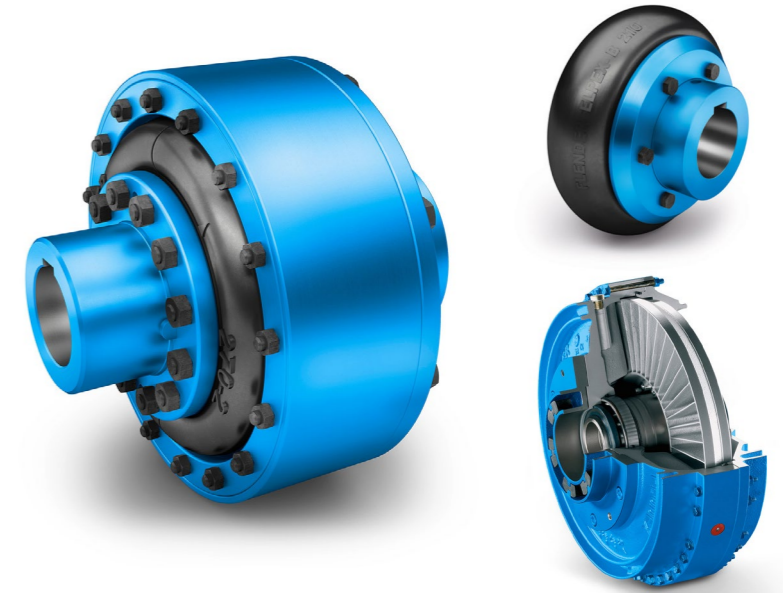
- Servoflex
- Servoflex sfr
- Sprflex
- Starflex
- Servorigid
- Contactlesslink Prospine
- Baumannflex
- Paraflex
- Schmidt
- Bellowflex
- Stepflex
- Centaflex



# FLENDER

**Range:**

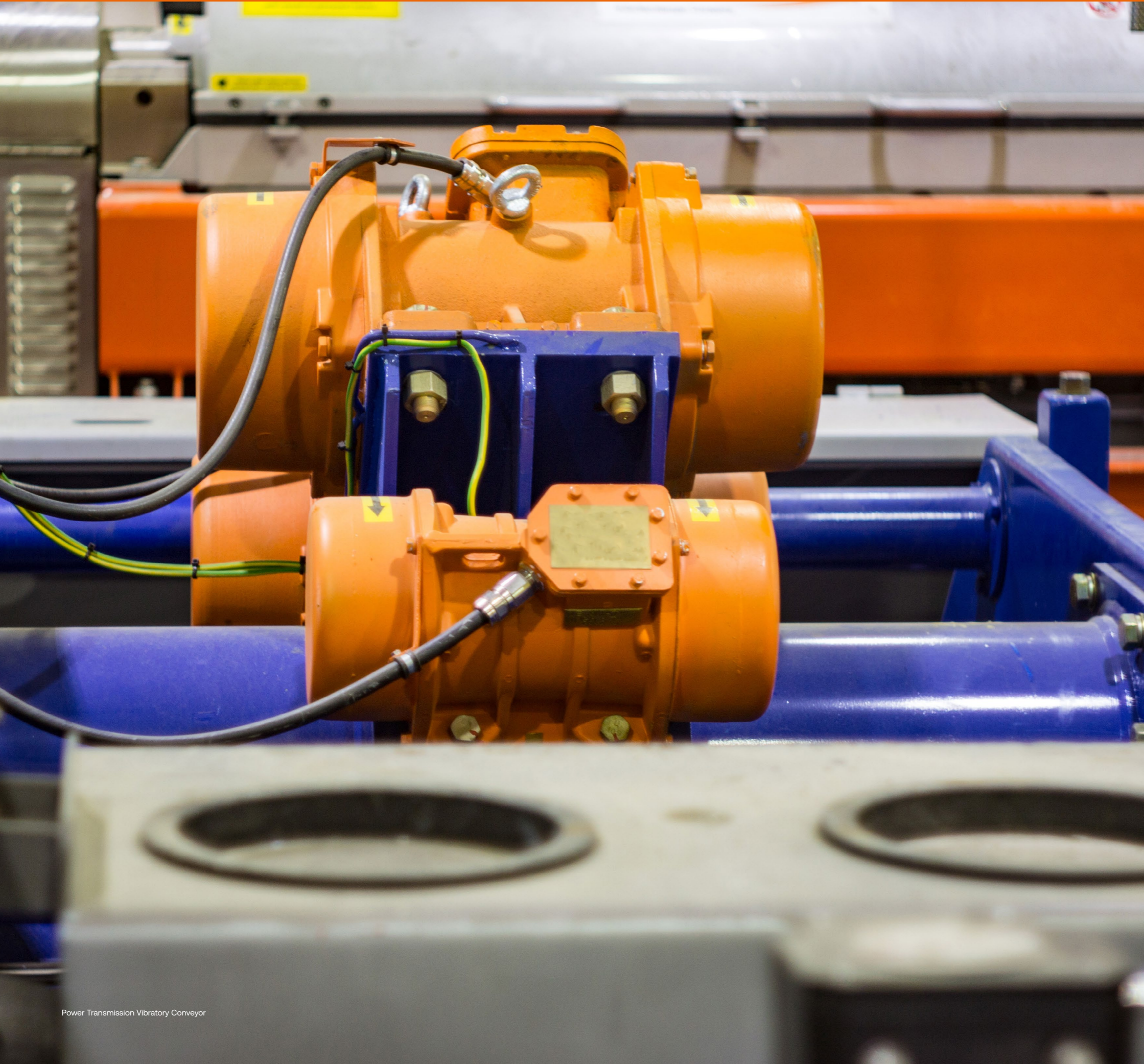
- Flexible
- Torsionally Rigid
- Hydrodynamic
- Railway
- Highly Flexible
- Backlash-Free



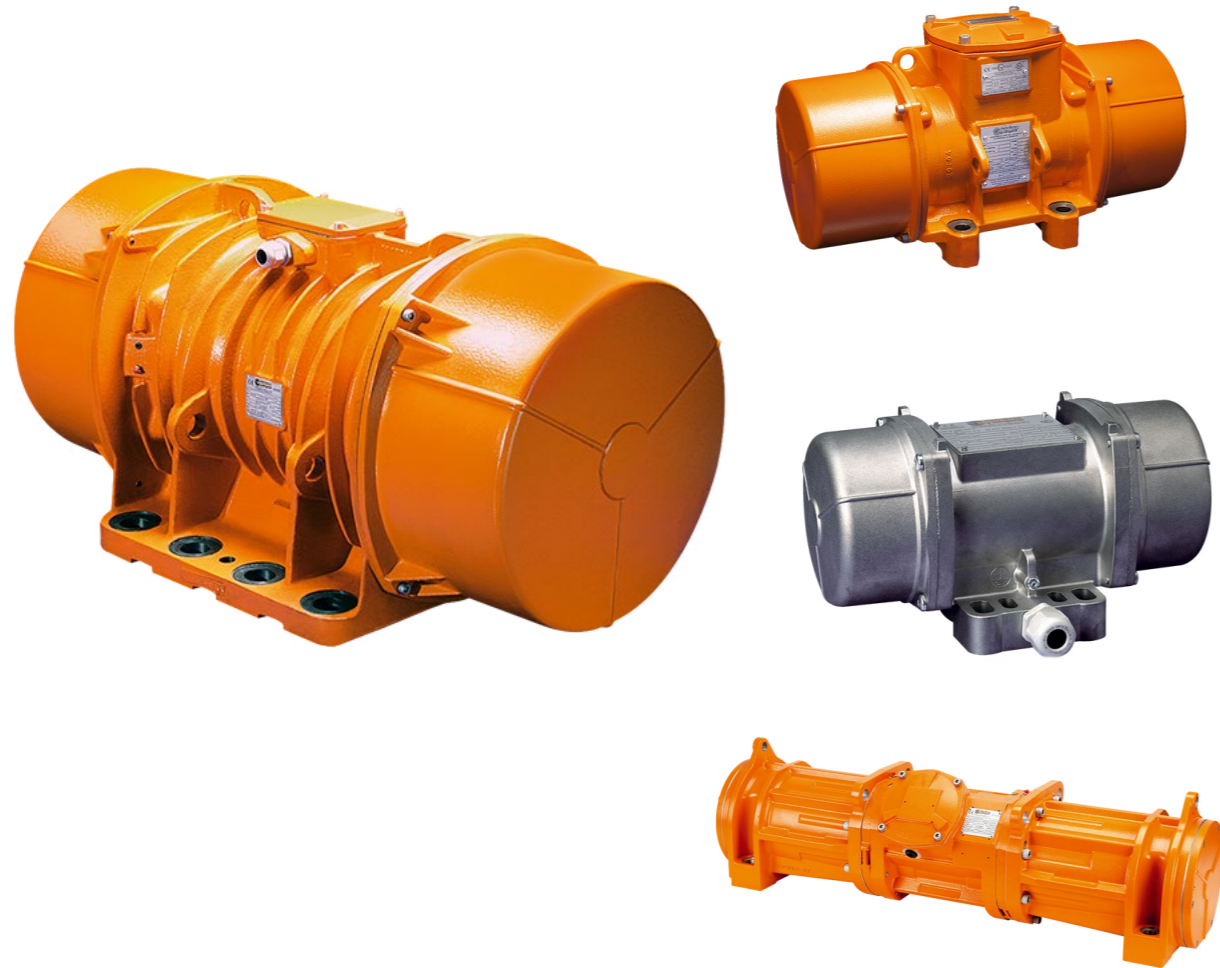
**Range:**

- Torque Limiters Couplings
- Sheargard Clutches and Couplings
- 'GE' Series Couplings Low Backlash Jaw Couplings
- 'L' Series Couplings Elastomeric Jaw Couplings
- 'KE' Series Couplings Heavy-duty Elastomeric Jaw Couplings
- Roller Chain and Delrin Chain Couplings LRC/LNC
- Gear Couplings GFA/GFAS Series
- 'GF' Series Polymer Gear Couplings
- Morflex Elastomeric Disc Drive Couplings
- Crossflex Disc Couplings





# Vibratory: Motors



With an extensive history in the use of vibratory motors in a wide range of applications, including mining, power supply, agriculture, and food processing, RR Fisher have teamed up with quality manufacturers to ensure the supply of the most fit for purpose model available.

Often the style of vibratory motor used depends on the application, the required vibration type (linear or rotary), power requirements, and other specific factors like size, mounting, and safety. By selecting the appropriate vibratory motor for a given task, industries can enhance performance, reduce maintenance, and improve the efficiency of their material handling or processing systems.

**Foot mounted electric vibrators:**

- MVSI
- MVSİ-TS Split Covers
- MVSİ-ACC Axial Coupling
- MVSİ-E Increased Safety
- MVSS Stainless Steel
- CDX Explosion Proof
- MVT, MVTX Explosion Proof Screen
- MICRO
- M3 Multi Hole Fixing
- M3-E Increased Safety Multi Hole Fixing
- MVCC Direct Current



For over 30 years RR Fisher's frequency controllers have allowed for adjustment of electronic vibration frequencies in feed conveyors to meet the specific requirements of their given application. Our Reovib controllers are a market leader. Engineered in Germany and known for their longevity, each unit is handmade and individually tested.

The range is tailored to various applications from simple motor control to advanced converters that can generate any desired operating frequency and amplitude for vibratory conveyors. These more advanced device's function using digital technology and are operated via an LED or an LCD display. All settings can be carried out from outside, keeping housing closed and the unit protected.

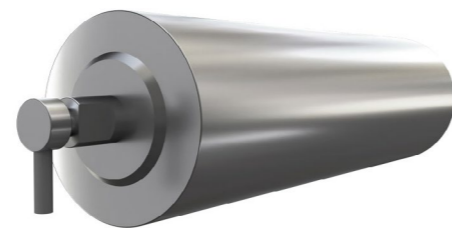
No matter the application, there is a Reovib controller that can offer the precise vibration control that is necessary to ensure optimal performance and output of your feed conveyor.

**Range:**

- REOVIB Frequency Converters
- REOVIB Smart Phase Angle Controllers
- REOVIB AC Magnets
- REO Accelerometers
- REO Measuring Equipment



## Conveyor: Motorised Pulleys



Our range of motorised conveyor pulleys offer an integrated solution to powering conveyor systems with fewer components. Made by quality manufacturers with reduced maintenance needs, these pulleys are ideal for industries where efficiency, compactness, and safety are paramount.

The main features of our Motorized Pulleys, all made by Rulmecca, are:

- Purpose-built design
- Totally enclosed inside a steel shell
- Safety
- Low purchasing and installation cost
- Low maintenance cost
- Efficiency
- Cleanliness
- Thermal protection
- Weight saving and distribution
- Variable frequency converter
- Fewer parts
- Low noise







To find out more get intouch at  
sydney@rrfisher.co.au  
+61 295 404 533

#### Our Transmission Partners

---



**FLENDER**



#### Our Vibratory Partners

---



**REO**

#### Our Conveyor Partner

---



[www.rrfisher.com.au](http://www.rrfisher.com.au)

Auckland | Palmerston North | Christchurch | Sydney